



ROCK PICKENS

ST. LAWRENCE COUNTY ROCK & MINERAL CLUB

Date July 2011

July 2011

Our next meeting is Thursday, July 7th, 2011 at 6:30 pm at Canton Library. Pot luck dinner. We'll be making final plans for the show, assembling signs, passing out flyers for regional distribution and of course we'll also have helper sign-up sheets for the show. Please attend! We need everyone to come and help!

President: William deLorraine

Vice President: Scott Sutherland

Secretary: Joanna deLorraine

Treasurer: Chris Sutherland

Field Trip Coordinators:

Bill deLorraine

Skyler Alverson

Scott Sutherland

Acting Co-Editors of Newsletter:

Bill & Joanna deLorraine

Webmaster: Glenn Simonelli

2011 Membership Dues collectible at any time but run from August 2011 to August 2012

If you do not have e-mail please let us know so we can mail you a hard copy of the newsletter.

Otherwise we strive to send all newsletters by e-mail. Make sure we are updated if your e-mail changes!

315-287-4652 or
wdellie@verizon.net

Please mail dues to: Chris Sutherland; Treasurer, 287 Cty. Rd. 29, Canton, NY 13617

Have you paid your dues? It's important if you plan on collecting; you'll need current Club membership and Eastern Federation insurance cards.

Please send a check for your dues to Chris so you can continue to receive newsletters and take part in club events.

Single Membership: \$10.00.
Family Membership: (Family members under the same roof at the same mailing address): \$20.00

THE CLUB'S WEBSITE:

www.stLawrencecountymineralclub.org

Minutes from the Last Meeting

Our June meeting was held at the Olde Smokehouse, Madrid. Seven people attended the meeting. It was noted that Paul Rice called asking for show flyers to pass out. We talked about our trip to Bush Farm which was a good day; everyone found something, esp. Jerry Curcio. Show chair Bob Taillon was not in attendance because of a trip to Albany.

Bill will do an outline for Bob starting with show set up, advertising, etc. Bob will e-mail Dot Badger about advertising and get back to Bill. Bill noted to call Dot also. She does an excellent job in advertising. We have 50 new signs on the way and plan to phase out the old wooden signs. Bill will print the dates and laminate them and we will work on signs at the next meeting plus get the flyers distributed as well. It's an ambitious agenda which is why we need all hands on deck for the meeting. Dino Zack will do a presentation at the show on fluorescents. Food Committee report. Chris Sutherland was the only member of the food committee in attendance. We talked about having Ruth and Les do the hot dog and burger stand again this year. We'll donate \$ to the Marines for the extra building which we plan to have for the fluorescent talk, Sat. night dinner and the auction. We will be ordering shirts soon; dark blue is the color this year. Chris will order the ticket drum as she has the tax ID #. We talked about having a trip to Crystal Grove to collect Herkimer Diamonds in September; September 10th and staying in cabins.

We went to the Marine Building and it looks great inside. Will work out perfectly. They can prepare a turkey dinner with all the fixings. (Turkey, potatoes, gravy, dressing, vegetable, salad and dessert).



ROCK PICKKENS

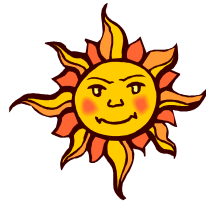
ST. LAWRENCE COUNTY ROCK & MINERAL CLUB

Date July 2011

Following the meeting Bill negotiated with the Marine representative on the price of the dinner. The two came up with the following plan. Club members will provide cakes and brownies for dessert as we've traditionally done in the past while the Marines will provide the Turkey dinner for \$9.95 per plate rather than the original quoted \$10.95 per plate.

Center of Progress Building
"Gems along the Erie Canal"
Sat. 10-6; Sunday 10-4

Bancroft, Ontario; Annual
Rockhound Gemboree; July
28-31, North Hastings Comm.
Centre, Curling Club. 10-7,
Sun 10-5. 613-332-1513 x17



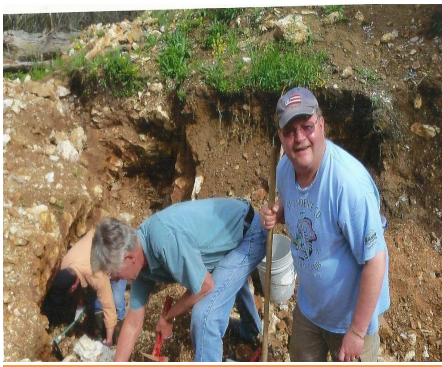
October

15-16 39th Annual Gem and
Mineral Show, Bristol, CT Beals
Community Ctr.
www.Bristolgem.org

**WALWORTH QUARRY OPEN
HOUSE**

Saturday October 9, 6:30 AM
- 2:00 PM & **Sun, Oct. 10**, 6:30
AM - 12 NOON - **Open to the
public.** Hard hat (bicycle
helmets for children OK),
safety glasses, long pants &
sturdy footwear allowed. Power
equipment allowed. This quarry
is known for its water clear
fluorite, calcite, sphalerite, and
dolomite. For more info, go to
www.rasny.org/mineral or e-
mail mineraltrips@rasny.org or
Nancy McCann at 395-1713

Field Trips:



August 27-28 45th **St.
Lawrence County Rock and
Mineral Club Annual Show;**
Madrid Community Center
1835 St. Hwy. 345
Madrid, NY
Sat 9-5; Sun 9-3



We had a field trip to Bush farm
on May 21st. Bill deLorraine led
the field trip. We met at the
Silver Leaf Diner then proceeded
to Bush Farm. Walking in was
rather muddy, but was worth the
trip. Members on the trip were
Bill and Joanna deLorraine, Vicky
and Mike MacAleese, Jerry
Curcio, and Francis Stunzi.

**September
17-18** Sat. 10-5, Sun. 10-4
**Rhinebeck, NY Dutchess County
Fairgrounds www.mhvgms.org**
55th Annual Franklin Mineral
Museum Gem & Mineral Show
September 24-25, 2011; Held at:
Franklin School, Washington Ave.,
Franklin N.J. Saturday
Indoor 9-6:00 p.m. Saturday Outdoor
Show 7:30 - 6:00 p.m.
Sunday Indoor 10- 5:00 p.m. Sunday
Outdoor 9-5:00

EFTA
Jake Kramer, editor E.F.T.A.
Website: SPEEDYJAKE@aol.com

Cindy Newman
knewman10@stny.rr.com

FMLS website
www.amfed.org/efmls/links.htm

EFMLS/AFMS Convention

**"Gems Along the Erie
Canal"
Syracuse, NY
July 7-10, 2011
Gem & Mineral Society of
Syracuse**

Upcoming Shows:



July 9-10 45th Annual Show
Syracuse, NYS Fairgrounds



Contact Cathy Patterson
315-6358-8817
315-480-8908



ROCK PICKENS

ST. LAWRENCE COUNTY ROCK & MINERAL CLUB

Date July 2011

cathypatterson@verizon.net

Birthstone for July

Ruby

Birthstone Color: Red



Like a perfect red rose, the Ruby's rich color speaks of love and passion. Called the "Rajnapura" or King of Gems by ancient Hindus, July's birthstone is among the most highly prized of gems throughout history. The Ruby was considered to have magical powers, and was worn by royalty as a talisman against evil. It was thought to grow darker when peril was imminent, and to return to its original color once danger was past—provided it was in the hands of its rightful owner!

Special Notes For Thursday's Meeting

I tried affixing one of the plastic laminated dates to one of the show signs with caulking gun adhesive instead of hot glue gun adhesive as we did last year. What I found out was that the caulking gun adhesive took "forever" to cure so that while the glue was curing the plastic date laminate was free to slip and slide around the sign. Worse yet, the date laminate freely peeled off. I recommend sticking with hot glue. If applied correctly it's difficult to pull the date laminate off the sign. So please **bring a glue gun and gloves to the meeting Thursday.**

Rubies were thought to represent heat and power. Ancient tribes used the gem as bullets for blowguns, and it was said that a pot of water would boil instantly if a Ruby was tossed into it. Ground to powder and placed on the tongue, this crystal was used as a cure for indigestion.

The word Ruby comes from the Latin "ruber," meaning red. It is a variety of the mineral Corundum, and is found as crystals within metamorphic rock. Corundum is the second hardest mineral, after Diamond. It comes in a variety of colors, and is considered a Sapphire in any color except red, which is designated as a Ruby. Rubies range in hue from an orangey red to a purplish red, but the

most prized gems are a true red in color. Large sized Rubies are very rare and valuable. The history of Ruby mining dates back more than 2,500 years ago. The most beautiful crystals are thought to be from Burma, but quality Rubies are also found in India, Sri Lanka, Australia, Kenya, Tanzania, Afghanistan, Pakistan, and the United States.

It has been said that the Ruby's red glow comes from an internal flame that cannot be extinguished, making a gift of this stone symbolic of everlasting love. With its hardness and durability, it is a perfect engagement gem. And if worn on the left hand, ancient lore has it that the Ruby will bring good fortune to its wearer, too!